



**DGCA
CERTIFIED**



+91-9976846909



leveltech12@gmail.com



www.leveltech.in



THE DRONE



Key Specifications



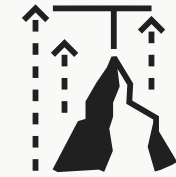
Weight
1.95 KG



Endurance
25 - 30 mins



Range
1.5 km



Max Altitude
120 m



Range
GoPro



Max Wind
25 kmph

Salient Features:



Superior Accuracy

More than **5cm** can be achieved with GCP



Class Leading Safety

Equipped with dual processors and sensors along with safety features like Return Home on **Low Battery**, **High Wind** and **GPS** glitches



Highly Portable

Portable package **weighing less than 5kg**. Easily carryable by a **Single person**



Fully Autonomous

Operates autonomously on **way point missions**



Robust Build Quality

Built with highest quality carbon fiber frame, **3000 cycle** of mapping operations guaranteed.



Easy to Use

Ready to fly under **5 minutes** with **just 3 clicks** of button.

Ground Control Software Features



Real time UAV tracking



Very intuitive and easy to use



Real time UAV parameter monitoring



Sensors calibration support



Building, area and corridor missions with multiple overlapping options



Supported on Android tab and mobile with regular updates

SHOP NOW!



+91-9976846909



www.leveltech.in



THE OUTPUTS

Orthomosaic Map



Digital Surface Model



Digital Terrain Model



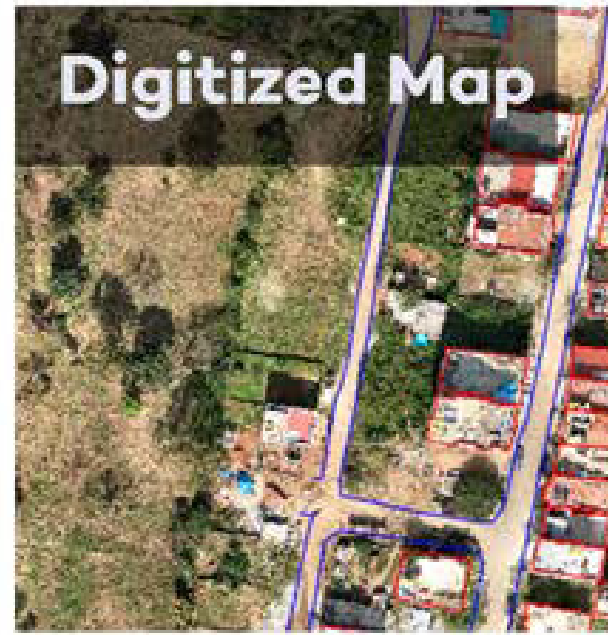
3D Contours



Spot Levels



Digitized Map



3D Textured Model



3D Point Cloud





THE USE CASES

Mining and Metal

- Mine topo maps and planning
- Volumetric measurements
- Road management and slope monitoring
- Determine changes before and after blast
- Survey hard to reach and risky area



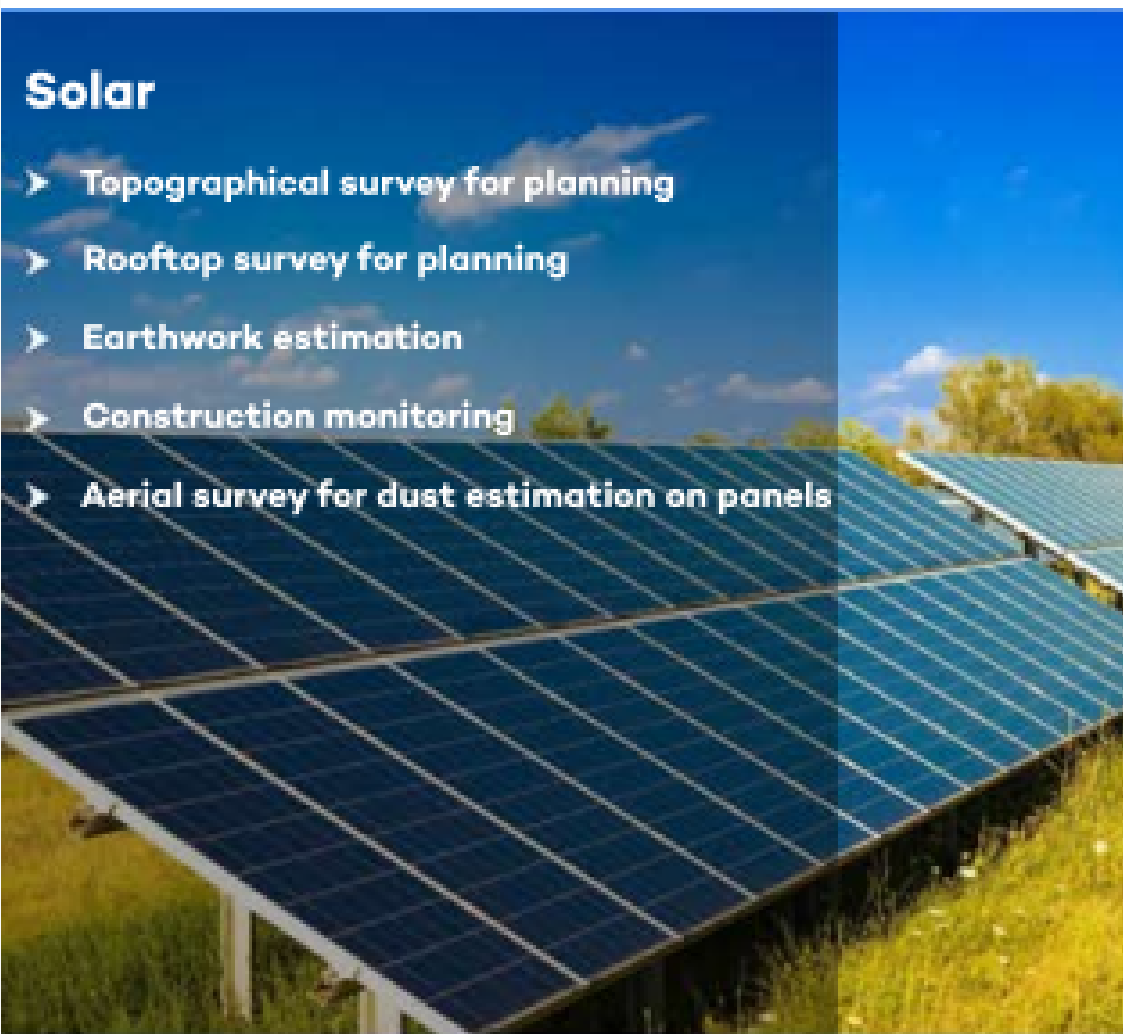
Construction

- Preconstruction survey and planning
- Volumetric measurements
- 3D Modelling of site
- Progress monitoring and reporting



Solar

- Topographical survey for planning
- Rooftop survey for planning
- Earthwork estimation
- Construction monitoring
- Aerial survey for dust estimation on panels



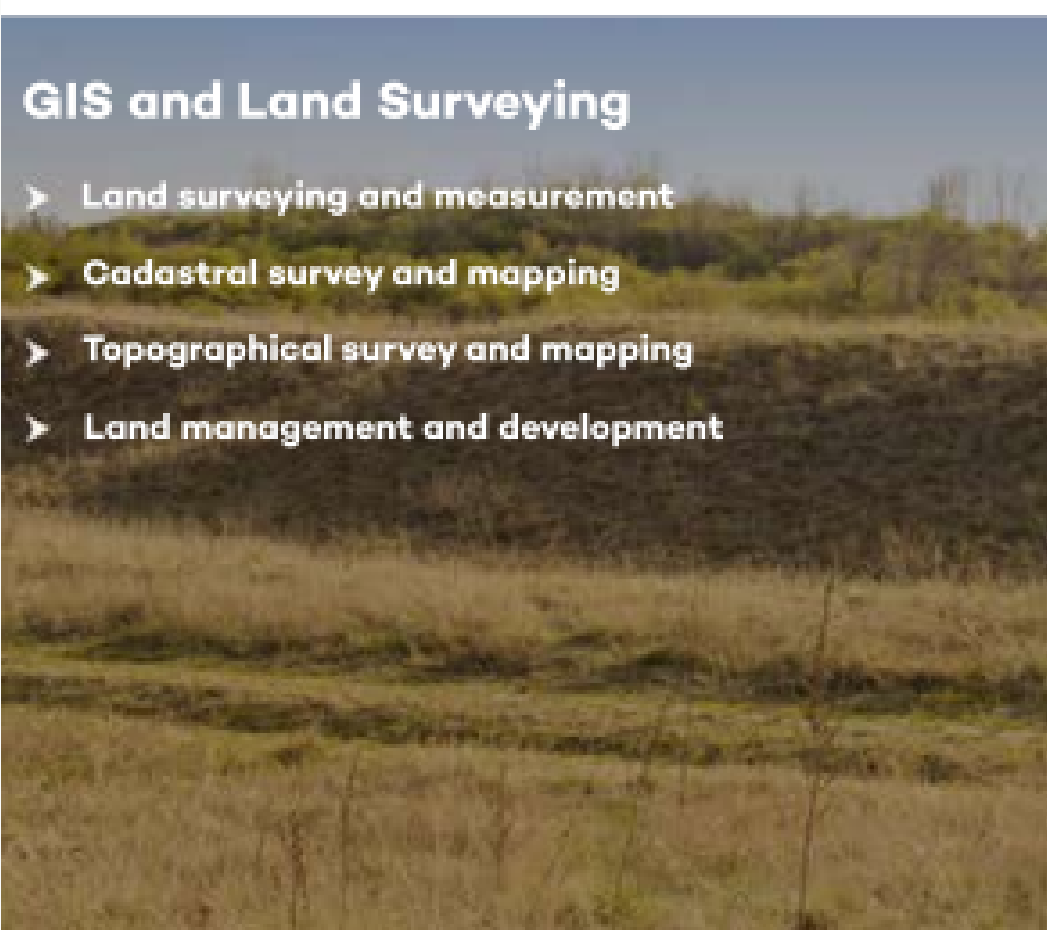
Irrigation and Agriculture

- Crop pattern survey
- Topographical survey for canal designing
- Farm survey for water supply design



GIS and Land Surveying


- Land surveying and measurement
- Cadastral survey and mapping
- Topographical survey and mapping
- Land management and development





**LEVEL TECH
DEALER | SUPPLIER**

SHOP NOW!

 **+91-9976846909**

 **www.leveltech.in**